

# SUMMER

Make the most of the 30 Non-School Days and Supplemental Programs by creating positive experiences for students beyond the school year.

The ELTAU is hosting a **two-part Summer Series** focusing on promising practices to provide students with hands -on activities throughout the summer, or other Non -School Days:

- Start planning for your program now
- Set SMART goals for summer
- Explore new ideas for disguising English, Math and Science
- Help students ignite their interest

Register on [ExpandedLearningR11.com](https://ExpandedLearningR11.com)



# TK/K Events and Professional Development

For the Fiscal Year (FY) 2025-26, professional development opportunities for Transitional Kindergarten (TK) and Kindergarten (K) educators and practitioners will be organized into two complementary domains:

## The TK/K Learning Series and TK/K Exploration Sessions

These two domains are designed to work together, much like the "lecture and laboratory" components of a traditional instructional curriculum, **blending theoretical knowledge with hands-on application.**



Expanded Learning  
TK/K Program Quality SelfAssessment Tool



Los Angeles County  
Office of Education

Register for our TK/K Sessions: [ExpandedLearningR11.com](https://ExpandedLearningR11.com)

# TK/K Learning Series



The TK/K Learning Series serves as the foundational "lecture" component, offering structured learning sessions **online**, focused on understanding key frameworks, standards and best practices for creating intentional learning environments. **These sessions provide educators with the tools, strategies and insights they need to design highquality, developmentally appropriate Expanded Learning programs for TK/K students.**

Part 1	<b>Foundations First:</b> High-Quality Learning for TK/K in Expanded Learning	Wednesday, September 3, 2025
Part 2	<b>Joyful Minds in Action:</b> Bringing Developmentally Appropriate Practice (DAP) to Life	Wednesday, November 5, 2025
Part 3	<b>Intentional Program Design:</b> Creating Meaningful TK/K Experiences in Non-Traditional Spaces	Wednesday, January 7, 2026
Part 4	<b>Building Resilience:</b> Trauma-Informed Practices for TK/K Students In Expanded Learning Programs	Wednesday, March 18, 2026
Part 5	<b>Supporting School Readiness:</b> Weaving Language, Literacy, Math and Science into Everyday Moments	Wednesday, April 15, 2026



Los Angeles County  
Office of Education

Register for our TK/K Sessions: [ExpandedLearningR11.com](https://ExpandedLearningR11.com)



# TK/K Exploration Sessions



TK/K Exploration Sessions function as the "lab" component, providing **in-person** opportunities for educators to engage in interactive, practice-based experiences. These gatherings allow participants to test ideas, collaborate with peers and explore how to bring the concepts learned in the Learning Series to life in realworld settings.

Part 1	<b>Bringing Frameworks to Life</b> Designing Intentional Learning Spaces for TK/K	Friday, December 5, 2025
Part 2	<b>Learning Through Play</b> in TK/K Expanded Learning Programs	Friday, February 13, 2026
Part 3	<b>Intentional Program Design:</b> Creating Engaging and Supportive Learning Experiences	Wednesday, March 4, 2026
Part 4	<b>Designing Resilient Spaces</b> Trauma-Informed Practices for TK/K Students in Expanded Learning	Friday, April 17, 2026
Part 5	<b>Making Learning Magical:</b> Math, Science and Literacy Through Play Based Activities	Thursday, May 14, 2026



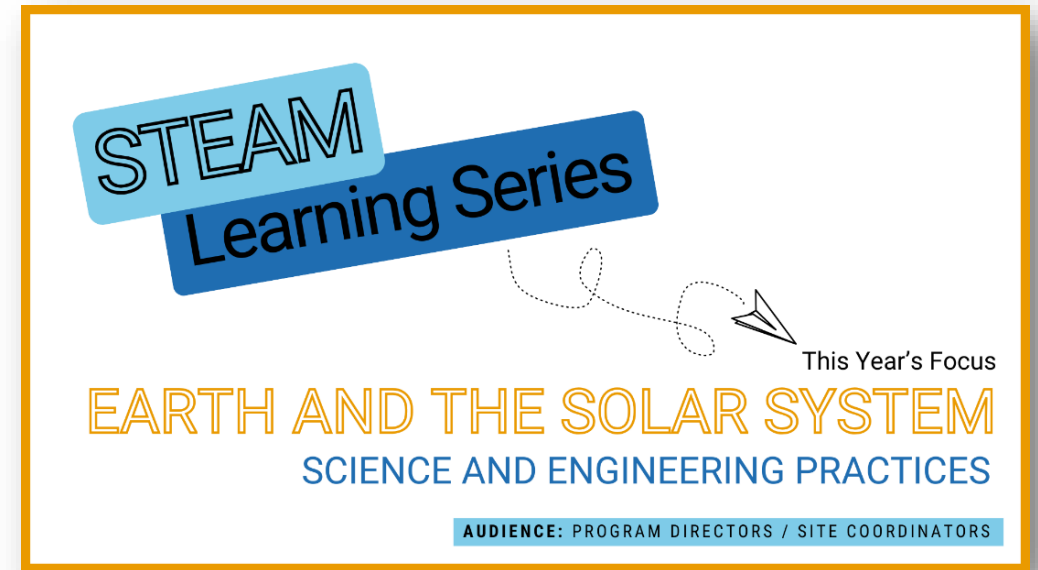
Los Angeles County  
Office of Education

Register for our TK/K Sessions: [ExpandedLearningR11.com](https://ExpandedLearningR11.com)

# STEAM Events and Professional Development

## Why attend the STEAM Learning Series?

- Hands-on learning activities
- Strengthen facilitation techniques
- Connections to the Point-of-Service Quality Standards
- Make Science and Engineering Practices fun!
- Literature and Art Connections
- Material take-a-ways



The STEAM Learning Series is held in-person at LACOE from 10 a.m.- noon

- ~~September 30, 2025~~
- ~~October 28, 2025~~
- ~~December 2, 2025~~

- January 27, 2026
- February 24, 2026
- April 14, 2026



**Notice and Wonder,  
Paper Airplanes and  
Engineering Practices**

**Changing Variables  
and  
Straw Rockets**

**Life in Space  
and focus on  
Astronauts**

**Asking Questions,  
Various Airplanes and  
Engineering Practices**

**Art and  
Space  
Activities**

**Stomp Rockets  
and Engineering  
Practices**



**Los Angeles County  
Office of Education**

# **STEAM Learning Series: Learning Progression**

# EXPANDED LEARNING PUBLICATIONS

LOS ANGELES COUNTY OFFICE OF EDUCATION | EXPANDED LEARNING TECHNICAL ASSISTANCE UNIT

All ELTAU publications are based in California Education Code (EC), Policy, Legislation and CDE-Expanded Learning Division guidance.

## EXPANDED LEARNING COMPLIANCE PUBLICATIONS

### PROGRAM AND FUNDING REQUIREMENTS



These three requirement documents provide Expanded Learning Programs foundational knowledge and information for ELO-P, ASES, 21<sup>st</sup> CCLC and 21<sup>st</sup> CCLC - ASSETS funded programs.

### REPORTING REQUIREMENTS



Expanded Learning reports and important deadlines from multiple sources are compiled into one centralized document.

Learn about the NEW annual Enrollment and Attendance Report for every Expanded Learning Program funded with ELO-P, ASES, 21<sup>st</sup> CCLC and 21<sup>st</sup> CCLC - ASSETS.



[ExpandedLearningR11.com](https://ExpandedLearningR11.com)

## EXPANDED LEARNING QUALITY PUBLICATIONS



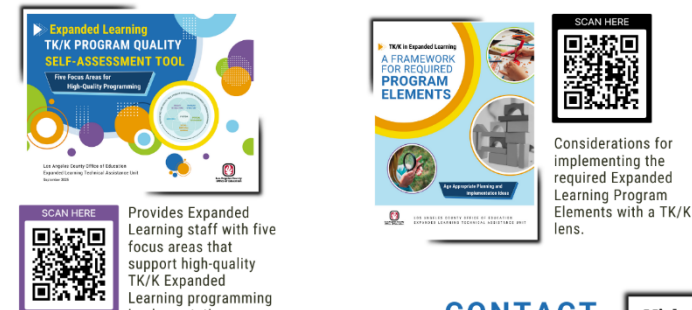
Consideration points and recommendations for planning and designing a Single, Comprehensive Expanded Learning Program for L.A. County LEAs with multiple sources of Expanded Learning funding.

Information and resources that could be considered foundational to the roles of Expanded Learning Personnel.

Design and implementation considerations for operating Attendance Recovery in conjunction with ELO Programs.

Asynchronous learning series consisting of on-demand, self-paced professional learning modules; designed to support both program implementation roles and program management roles.

## TRANSITIONAL KINDERGARTEN AND KINDERGARTEN (TK/K) PUBLICATIONS



Provides Expanded Learning staff with five focus areas that support high-quality TK/K Expanded Learning programming implementation.

Considerations for implementing the required Expanded Learning Program Elements with a TK/K lens.

### CONTACT ELTAU



**Michelle R. Perrenoud, Ed.D.**  
Expanded Learning Regional Administrator  
Expanded Learning Technical Assistance Unit  
Los Angeles County Office of Education  
✉ [Perrenoud\\_Michelle@lacoe.edu](mailto:Perrenoud_Michelle@lacoe.edu)  
☎ 562-922-6269



Los Angeles County  
Office of Education

# ELTAU Publications





# NEW ASYNCHRONOUS TRAINING SERIES TOOLKIT

## Expanded Learning Quality Standards and CQI TRAINING SERIES TOOLKIT

### Asynchronous Learning Series

On-demand professional learning modules to support Expanded Learning Program staff in accessing content at their own pace

LOS ANGELES COUNTY OFFICE OF EDUCATION  
EXPANDED LEARNING TECHNICAL ASSISTANCE UNIT



The *Expanded Learning Quality Standards and CQI Training Series Toolkit* is designed to support Expanded Learning program staff by providing access to content appropriate for both **program implementation roles** (Site Coordinators and Frontline Staff) and **program management roles** (Program Directors and their Site Coordinator teams).

### Quality Standards

The learning series contains thirteen video-based training modules, focused on a specific Quality Standard, describing how it is demonstrated at the program, staff and participant levels, as well as explaining its connection to Expanded Learning programs, many with an engaging activity. The modules are:

- **Introductory** (1)
- **Point-of-Service** modules (6)
- **Programmatic** modules (6)

### CQI

The toolkit contains three webinars and one implementation tool:

- **Assess Phase:** Identify focus areas, research questions and data collection tools
- **Plan Phase– Part 1:** Data analysis
- **Plan Phase– Part 2:** SMART goals and action planning
- **Improve Phase:** CQI Reflection Tool for ongoing review and adjustment



Los Angeles County  
Office of Education



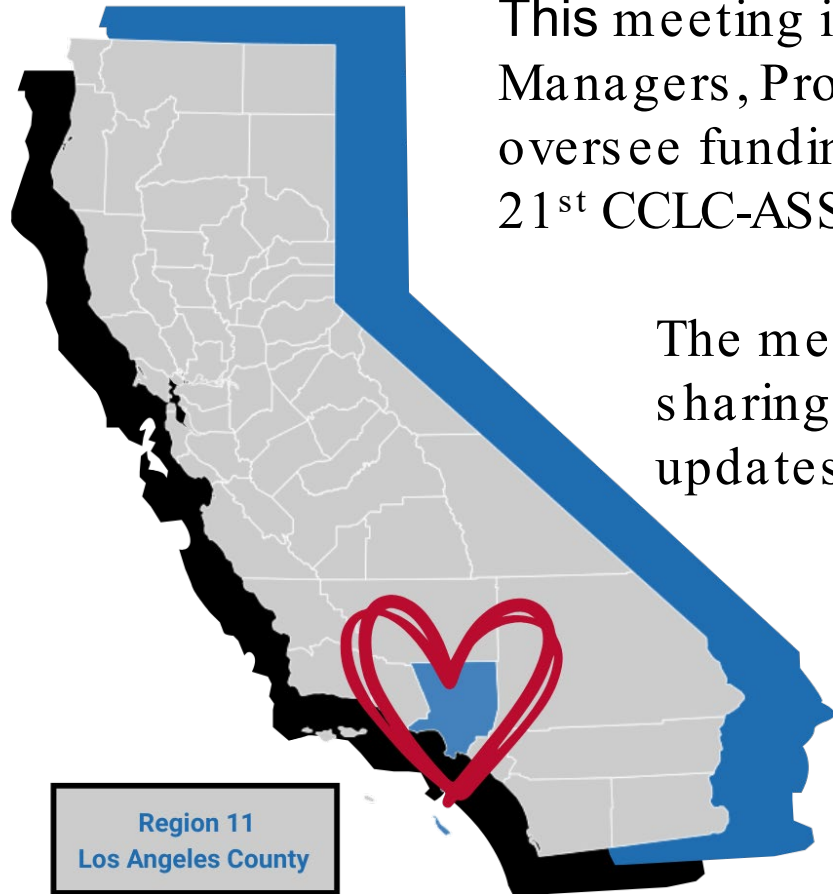


Our Website has:

- Events and Professional Development
- Resources
- Contact Information for Region 11: ELTAU Staff and CDEEXLD Staff



# LACOE Expanded Learning Advisory Meetings



This meeting is a countywide gathering for all Administrators, Grant Managers, Program Directors and other Expanded Learning leaders who oversee funding and/or administration of ASES, 21<sup>st</sup> CCLC, 21<sup>st</sup> CCLC-ASSETs and ELO programs.

The meeting will include presentations, resource sharing, networking and peer-learning, local, state and federal updates and much more.

**Register Now:** [ExpandedLearningR11.com](https://ExpandedLearningR11.com)

All meetings are scheduled from 9 a.m. – noon

- ~~Friday, January 23, 2026~~ ~~In-Person~~
- Friday, March 13, 2026 In-Person
- Friday, May 29, 2026 Via Zoom



Los Angeles County  
Office of Education

Email notifications will be sent from the  
[ExpandedLearning@laoe.edu](mailto:ExpandedLearning@laoe.edu) email account.

# Region 11: LACOE ELTAU Contact Information

**Michelle R. Perrenoud, Ed.D.**  
Expanded Learning Regional Administrator  
SSEL County Lead  
Phone: 562-824-2625  
Email: [Perrenoud\\_Michelle@laoe.edu](mailto:Perrenoud_Michelle@laoe.edu)

**Emily Tay**  
Expanded Learning Program Consultant  
Phone: 562-401-5766  
Email: [Tay\\_Emily@laoe.edu](mailto:Tay_Emily@laoe.edu)

**Tom McFadden**  
Expanded Learning Program Consultant  
Phone: 562-922-6589  
Email: [McFadden\\_Tom@laoe.edu](mailto:McFadden_Tom@laoe.edu)

**Suzanne Hill**  
Expanded Learning Program Consultant  
Phone: 562-922-6285  
Email: [Hill\\_Suzanne@laoe.edu](mailto:Hill_Suzanne@laoe.edu)

**Sue Gevedon**  
Expanded Learning Program Specialist  
Phone: 562-940-1783  
Email: [Gevedon\\_Sue@laoe.edu](mailto:Gevedon_Sue@laoe.edu)

**Mary Cruz Rojas**  
Expanded Learning Program Specialist  
Phone: 562-922-6630  
Email: [Rojas-Castro\\_Mary@laoe.edu](mailto:Rojas-Castro_Mary@laoe.edu)

**Laura De Anda**  
Administrative Assistant  
Phone: 562-922-6269  
Email: [DeAnda\\_Laura@laoe.edu](mailto:DeAnda_Laura@laoe.edu)



# Region 11: CDE EXLD Contact Information

**Iyore Osamwonyi**  
916-982-2180  
[iosamwonyi@cde.ca.gov](mailto:iosamwonyi@cde.ca.gov)  
Education Programs Consultant  
for LEAs/Grantees (A-Li)

**Darrell Parsons**  
916-319-0314  
[dparsons@cde.ca.gov](mailto:dparsons@cde.ca.gov)  
Education Programs Consultant  
for LEAs/Grantees (Lo-Z)



**Anna Lee**  
916-327-5928  
[anlee@cde.ca.gov](mailto:anlee@cde.ca.gov)  
Fiscal Analyst for  
LEAs/Grantees (A-Li)

**Jacqueline Burnett**  
916-319-0719  
[jburnett@cde.ca.gov](mailto:jburnett@cde.ca.gov)  
Fiscal Analyst for  
LEAs/Grantees (Lo-Z)





