

# LACOE - Expanded Learning Technical Assistance Unit (ELTAU)

## *Updates & Highlights*



# R11: Expanded Learning Site Visits

**Site Visits will begin this fall!**

## **Purpose:**

The purpose of these visits is to focus on site-level support around Expanded Learning quality and compliance. Discussions will focus on topics such as program offerings, enrollment and attendance, Continuous Quality Improvement, professional development, and more. With site-level leaders playing such a crucial role within Expanded Learning, we aim to provide support where additional attention may be needed and spotlight the exceptional practices already taking place on-site.

## **Site Selection:**

School sites will be selected based on one or more of the following criteria:

- Newly funded LEA, Grantee, or Site
- Change in leadership
- Attendance concerns
- LEA, Grantee, or CDE request



*"We rise by lifting others."  
– Robert Ingersoll*

# R11: 2023-24 Professional Development Opportunities

- **Orientations**
  - ASES, 21<sup>st</sup> CCLC, and ELO-P Braided
  - ELO-P Only
- **CDE**
  - ASSIST
- **Grade-Level Specific**
  - Age and Stage Development
  - Get Set for TK/K
  - Student Behavior Strategies
- **Leadership**
  - Compassionate Systems
  - Leadership Development Institute (LDI)
  - Site Coordinator

- **Learning Hubs**
  - STEAM
  - TK/K
- **Quality Standards for Expanded Learning**
- **Social Emotional Development**
  - Social Emotional Well-Being
- **STEAM**
- **Summer**
- **More to come...**



# R11: CypherWorx Opportunity

Join us on September 21, 2023 as we explore CypherWorx, an online professional development and training management system.

- Attendees will be provided access to hundreds of online training courses and a robust training management system.
- With this access, leaders will have the ability to customize, track, and report learning and professional development for all staff.

As an Expanded Learning program in LA County, you will receive exclusive no-cost access to CypherWorx's online courses and their training management system until June 30, 2024. After this period, agencies will have the option to contract with CypherWorx independently.

Check out the CypherWorx K-12 Catalog here: <https://cypherworx.com/wp-content/uploads/2022/05/CypherWorx-K-12-Catalog.pdf>

[Reserve](#) your seat now to learn more!



# R11: Leadership Development Institute (LDI)

Come join us for our **10<sup>th</sup> year** of the Leadership Development Institute. This learning series will cultivate Site Coordinators' and Program Directors' understanding of how to develop and deliver high-quality programs and how to build the capacity of their program staff.

**The first meeting is September 19<sup>th</sup>.**

Participates must:

- Must attend all 18 learning session throughout the year
- Must have the approval of supervisor
- Send application by Noon on Tuesday, September 12, 2023



[Program Description](#)

|

[Program Application](#)





# R11: TK/K Learning Hub Overview

**TK/K Learning Hub Purpose:** The Region 11 TK/K Learning Hub aims to identify needs and design supports for Expanded Learning Programs serving TK/K Students.

TK/K Learning Hub Activities will include the following:

- TK/K Learning Hub Meetings – **Our first meeting will be on September 29, 2023**
- TK/K Focused Site Visits
- TK/K Training and Professional Development Opportunities
- TK/K Spot Light Communication
- TK/K State Work Group (Tiger Team) Updates
- TK/K and County and State UPK Updates

To join the TK/K Learning Hub, visit the [R11 Website: LACOE Expanded Learning Hubs](#)

## **Upcoming TK/K Trainings:**

- TK/K Grade Level Training – September 12, 2023
- TK/K Whole Child Learning Series: Part 1 – September 14, 2023
- TK/K Whole Child Learning Series: Part 2 – September 28, 2023

To register for the TK/K Trainings, visit the [R11 Website: Events and Professional Development](#)

## **Free Online Training from [CypherWorx](#)**

- Indoor Learning Environments and Indoor Play TK/K



# R11: TK/K Focused Site Visits

**Purpose:** We are looking to gather tips, strengths, areas of need, and innovative practices for serving TK/K students. TK/K Focused Site Visits include ELTAU staff and the Expanded Learning program staff of participating sites.

## **TK/K Focused Site Visit Outcomes:**

- Real time, in person ELTAU coaching (e.g. sharing innovative practices and resources) for TK/K programming.
- Collegial Conversations between Expanded Learning program staff and ELTAU staff that will help elevate serving TK/K students.
- Innovative practices and resource sharing during R11 TK/K Learning Hub Meetings.



**Interested in a TK/K Focused Site Visit?**  
Make sure to fill out the survey during our  
“Snapshot-in-Time” coming up in a few  
minutes.

# R11: STEAM Hub Overview

**Purpose:** The Region 11, Los Angeles County Expanded Learning STEAM Hub offers a variety of learning opportunities for all Expanded Learning staff. We partner with many organizations to help build the capacity, confidence and competence of the participants to provide quality STEAM learning experiences for students.

## STEAM Steering Committee – Save the date – December 7<sup>th</sup>!

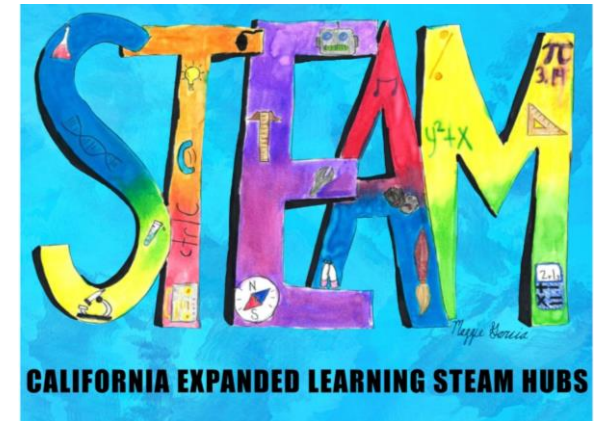
The R11 Expanded Learning STEAM Hub Steering Committee is intended to be representative of STEAM educators throughout LA County, including by not limited to educators from STEAM-rich institutions, core content areas, and local businesses. Participants collaborate with the ELTAU in supporting high-quality STEAM Learning Opportunities for Los Angeles County youth participating in Expanded Learning Programs.

## STEAM Learning Series

The STEAM Learning Series exists to support all Expanded Learning staff who wish to strengthen their understanding and confidence with STEAM content and practices with the purpose of creating positive STEAM learning environments for the youth in their programs. The STEAM Learning Series focuses on the importance of strategies and mindsets that each practitioner should have as they implement these opportunities.

## STEAM - LACOE Expanded Learning Hub

The purpose of the LACOE Expanded Learning Hubs is to provide stakeholders an opportunity to participate in collaborative learning, where members actively engage around shared needs and interests, in this case STEAM in Expanded Learning. In addition, the conversations and discoveries that emerge from within the Hubs will further inform practice and advocacy efforts within the expanded learning field. These Hubs are also a place for Steering Committee Partners to showcase their resources and learning opportunities for Expanded Learning staff.





# R11: STEAM Steering Committee

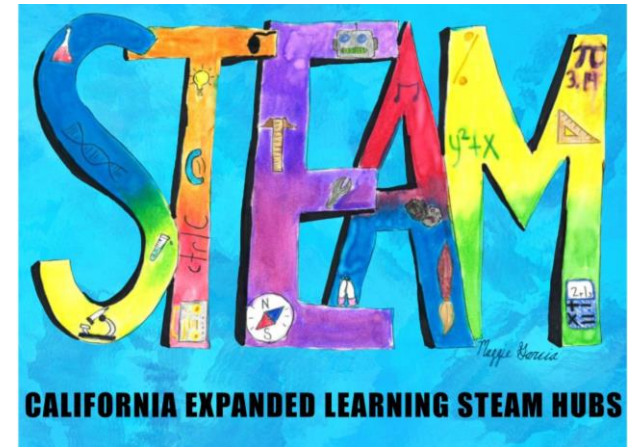
Upcoming meetings: Thursdays – December 7, 2023; March 7, and May 30, 2024

STEAM Steering Committee meets via Zoom: 9:30 a.m. – 11:00 a.m.

## STEAM Steering Committee

The R11 Expanded Learning STEAM Hub Steering Committee is intended to be representative of STEAM educators throughout LA County, including by not limited to educators from STEAM-rich institutions, core content areas, and local businesses. Participants collaborate with the ELTAU in supporting high-quality STEAM Learning Opportunities for Los Angeles County youth participating in Expanded Learning Programs.

To register for the STEAM Steering Committee, visit the [R11 Website: STEAM](#).



# R11: STEAM Learning Series

**Upcoming meetings: Thursdays – Sept. 21, Oct. 5 & 19, 2023**

**STEAM Learning Series meets bi-monthly via Zoom: 11:00 a.m. - 12:30 p.m.**

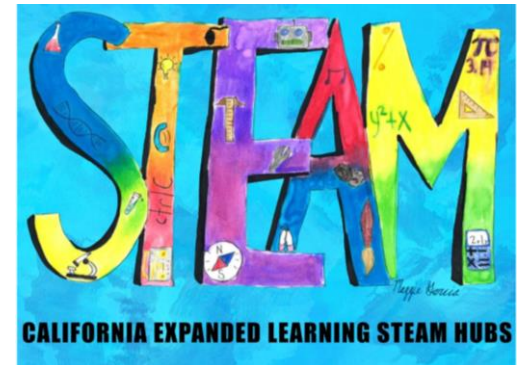
## **Focus for September and October**

- What is Inquiry? How do you encourage the inquiry mindset?
- Bloom's Taxonomy: What is it and how do you use it to help your students and/or staff create better questions?
- Building Curiosity and Wonder: Utilizing the Inquiry Protocol to transform an activity into a learning opportunity.

## **STEAM Learning Series**

The STEAM Learning Series exists to support all Expanded Learning staff who wish to strengthen their understanding and confidence with STEAM content and practices with the purpose of creating positive STEAM learning environments for the youth in their programs. The STEAM Learning Series focuses on the importance of strategies and mindsets that each practitioner should have as they implement these opportunities.

To register for the STEAM Learning Series Sessions, visit the [R11 Website: STEAM](#).



# R11: STEAM in ACTION @ Discovery Cube LA

Upcoming Event: Tuesday, October 24, 2023

10:00 a.m. – 12:00 p.m.

## STEAM in Action @ Discovery Cube

Join the LACOE Expanded Learning STEAM Hub for an in-person event hosted at Discovery Cube, LA in Sylmar. During this opportunity, Discovery Cube will be facilitating a **hands-on activity** that builds off of online resources available to Expanded Learning programs. They will also be sharing about their field trip possibilities and on-site programs that they can offer.

To register for the STEAM Expanded Learning Hub, visit the [R11 Website: STEAM](#)



DiscoveryCube  
OC & LA

## STEAM - LACOE Expanded Learning Hub

The purpose of the LACOE Expanded Learning Hubs is to provide stakeholders an opportunity to participate in collaborative learning, where members actively engage around shared needs and interests, in this case STEAM in Expanded Learning. In addition, the conversations and discoveries that emerge from within the Hubs will further inform practice and advocacy efforts within the expanded learning field. These Hubs are also a place for Steering Committee Partners to showcase their resources and learning opportunities for Expanded Learning staff.



Los Angeles County  
Office of Education

STEAM Learning Series | STEAM - LACOE Expanded Learning Hub | STEAM Steering Committee

# Fall STEAM Activities for Program Site



- 🍁 **Cardboard Carnival Games**  
<https://frugalfun4boys.com/cardboard-carnival-games/>



- 🍁 **Leak Proof Zip-Lock Bag**  
<https://www.steamsational.com/easy-3-steps-to-the-perfect-leak-proof-bag-science-experiment/>



- 🍁 **Water on a Penny**  
<https://littlebinsforlittlehands.com/drops-on-a-penny-lab/>



# Staffing: Small Group Conversation – Padlet

In your Breakout Room, please respond to any of the following prompts:

1. What innovative strategies do you have for **staff recruitment and hiring procedures**?
2. What staffing strategies are you using to **reduce your waitlist**?
3. What innovative strategies do you have for **staff retention**?
4. How do you create a **positive work culture** for staff?
5. In regards to staffing within Expanded Learning, what are you **noticing** and what are you **wondering** about?





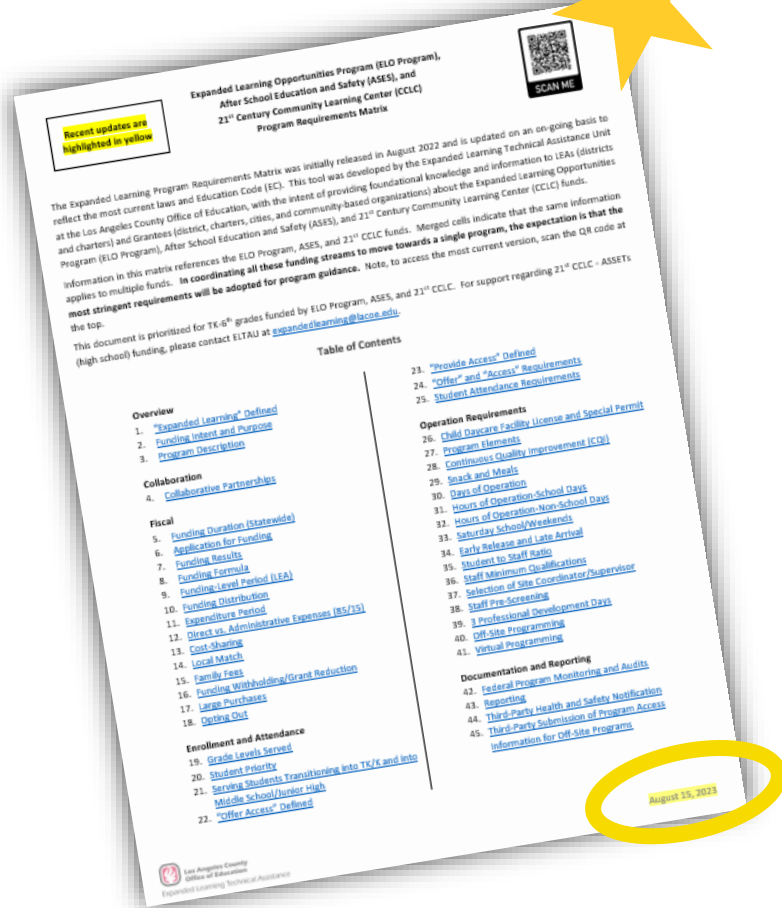
## Staffing Conversation

Expanded Learning Advisory Meeting September 8, 2023

Room 3	Room 4	Room 5	Room 6	Room 7
+	+	+	+	+
<p>1. What innovative strategies do you have for staff recruitment and hiring procedures?</p> <p>Add comment</p>	<p>1. What innovative strategies do you have for staff recruitment and hiring procedures?</p> <p>Add comment</p>	<p>1. What innovative strategies do you have for staff recruitment and hiring procedures?</p> <p>Add comment</p>	<p>1. What innovative strategies do you have for staff recruitment and hiring procedures?</p> <p>Add comment</p>	<p>1. What innovative strategies do you have for staff recruitment and hiring procedures?</p> <p>Add comment</p>
<p>2. What staffing strategies are you using to reduce your waitlist?</p> <p>Add comment</p>	<p>2. What staffing strategies are you using to reduce your waitlist?</p> <p>Add comment</p>	<p>2. What staffing strategies are you using to reduce your waitlist?</p> <p>Add comment</p>	<p>2. What staffing strategies are you using to reduce your waitlist?</p> <p>Add comment</p>	<p>2. What staffing strategies are you using to reduce your waitlist?</p> <p>Add comment</p>
<p>3. What innovative strategies do you have for staff retention?</p> <p>Add comment</p>	<p>3. What innovative strategies do you have for staff retention?</p> <p>Add comment</p>	<p>3. What innovative strategies do you have for staff retention?</p> <p>Add comment</p>	<p>3. What innovative strategies do you have for staff retention?</p> <p>Add comment</p>	<p>3. What innovative strategies do you have for staff retention?</p> <p>Add comment</p>
<p>4. How do you create a positive work culture for staff?</p> <p>Add comment</p>	<p>4. How do you create a positive work culture for staff?</p> <p>Add comment</p>	<p>4. How do you create a positive work culture for staff?</p> <p>Add comment</p>	<p>4. How do you create a positive work culture for staff?</p> <p>Add comment</p>	<p>4. How do you create a positive work culture for staff?</p> <p>Add comment</p>
<p>5. In regards to staffing within Expanded Learning, what are you noticing and what are you wondering about?</p> <p>Add comment</p>	<p>5. In regards to staffing within Expanded Learning, what are you noticing and what are you wondering about?</p> <p>Add comment</p>	<p>5. In regards to staffing within Expanded Learning, what are you noticing and what are you wondering about?</p> <p>Add comment</p>	<p>5. In regards to staffing within Expanded Learning, what are you noticing and what are you wondering about?</p> <p>Add comment</p>	<p>5. In regards to staffing within Expanded Learning, what are you noticing and what are you wondering about?</p> <p>Add comment</p>



# ELO-P, ASES, & 21<sup>st</sup> CCLC Program Requirements Matrix Update



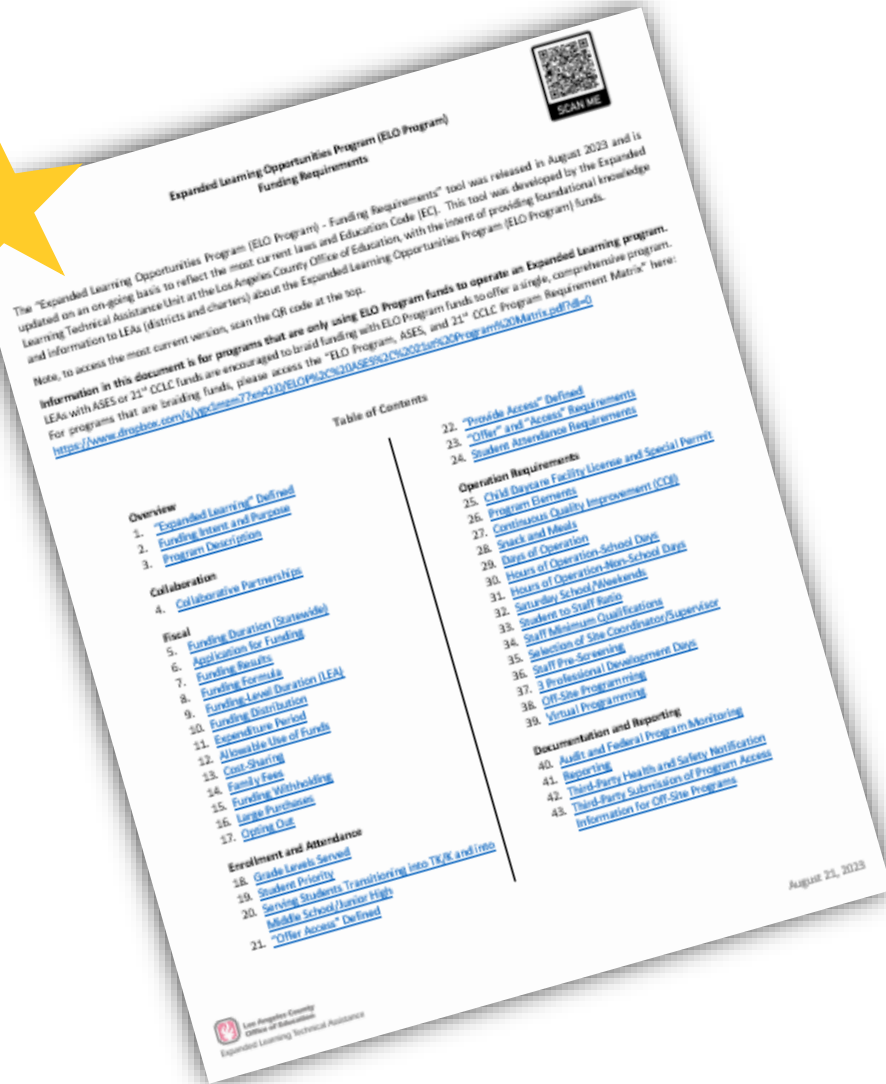
- Last updated on **August 21, 2023**
  - Includes updates based on SB 114, as well as additional guidance updates
  - Recent changes **highlighted in yellow**
- [CLICK on the image to access the tool]



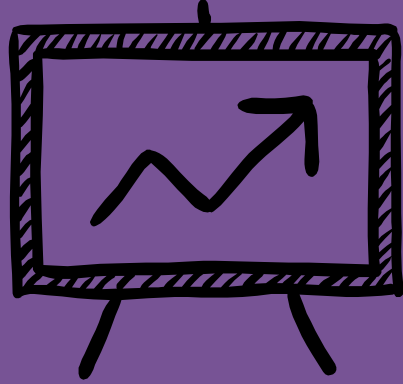
# Expanded Learning Opportunities Program Requirements

This tool is specifically designed for Expanded Learning programs utilizing **ONLY ELO Program** funds to operate their Expanded Learning program.

[CLICK on the image to access the tool]







# Snapshot-in-Time Survey

[Click here to complete the survey](#)

---





# 2024 BOOST Conference

April 30-May 3, 2024  
Palm Springs, CA

**YOU BELONG HERE!**

# Over 3,000 Educators Attended in 2023

In addition to regular workshops, you will also have access to:

BOOST Live Podcast Lounge  
BOOST Nation: Town Hall meetings  
Inspiration Station Workshops  
Camp Inspire Workshops  
Panel Sessions  
BOOST Film Festival  
Networking Events  
Exhibit Hall  
Healthy Meals

[www.boostconference.org](http://www.boostconference.org)





**Early-Bird Registration  
Ends Oct. 31<sup>st</sup>**

**Early-Bird Registration  
Now through October 31<sup>st</sup>**

**Standard Registration  
November 1, 2023-March 31, 2024**

[www.boostconference.org/registration](http://www.boostconference.org/registration)



[www.boostconference.org](http://www.boostconference.org)







# Hotel Room Blocks Open

Drift Palm Springs  
Hilton Palm Springs  
Margaritaville Resort  
Renaissance Palm Springs  
Courtyard Marriott  
Rowan Palm Springs  
Sonder V

More hotels will be announced this fall.

**NOTE:** Book your room(s) as soon as you register for the conference as they will sell out.

# RFP Deadline Oct. 31<sup>st</sup>

Help shape the conversation at the BOOST Conference. We are accepting creative and diverse workshop proposals that highlight the latest innovative ideas and educational trends, research, promising practices, and high-quality programming and activities to support our global community of in and out-of-school time educators.

[www.boostconference.org/rfp](http://www.boostconference.org/rfp)





# Inspiration Station Workshops

45-minute tabletop workshops in the Exhibit Hall

<http://www.boostconference.org/inspiration-stations>





# Student Artwork

THANK YOU TO  
the Expanded Learning Technical  
Assistance Unit at LACOE and  
STAR Education  
for your leadership!

Highlight your Program at BOOST!

Physical artwork  
Digital artwork

[www.boostconference.org/student-artwork](http://www.boostconference.org/student-artwork)





# Legislative Updates

## California AfterSchool Network (CAN)

Heather Williams  
Director of Policy & Outreach



Los Angeles County  
Office of Education



# Policy Updates

## *LACOE Expanded Learning Advisory Meeting*

Friday, Sept 8, 2023

[Click here for presentation slides](#)

# Final Meeting Announcements





**WE WANT YOUR  
FEEDBACK**

<https://www.surveymonkey.com/r/JBGK5Z2>





# Lights On Afterschool

*Lights On Afterschool* is the only nationwide event celebrating afterschool programs and their important role in the lives of children, families and communities. The effort has become a hallmark of the afterschool movement and generates media coverage across the country each year.

**Thursday,  
October 26, 2023**

<http://www.afterschoolalliance.org/loa.cfm>





# Mark Your Calendar & Register

2023-24 LACOE Expanded Learning Advisory Meetings

**Via ZOOM 9AM – 12PM**

**Register Now**

<https://ExpandedLearningR11.com>

~~September 8, 2023~~

November 3, 2023

January 26, 2024

March 15, 2024

May 17, 2024



Email notifications will be sent from the [ExpandedLearning@lacoed.edu](mailto:ExpandedLearning@lacoed.edu) email account.

# R11: ELTAU Contact Information

**Michelle R. Perrenoud, Ed.D.**

SSEL County Lead

Phone: 562-824-2625

Email: [Perrenoud\\_Michelle@lacoed.edu](mailto:Perrenoud_Michelle@lacoed.edu)

**Marti Boots**

Administrative Aide

Phone: 562-922-6269

Email: [Boots\\_Marti@lacoed.edu](mailto:Boots_Marti@lacoed.edu)

**Sue Gevedon**

Program Specialist

Phone: 562-940-1783

Email: [Gevedon\\_Sue@lacoed.edu](mailto:Gevedon_Sue@lacoed.edu)



**Los Angeles County  
Office of Education**

**Suzanne Hill**

Program Consultant

Phone: 562-922-6285

Email: [Hill\\_Suzanne@lacoed.edu](mailto:Hill_Suzanne@lacoed.edu)

**Tom McFadden**

Program Consultant

Phone: 562-922-6589

Email: [McFadden\\_Tom@lacoed.edu](mailto:McFadden_Tom@lacoed.edu)

**Emily Tay**

Program Consultant

Phone: 562-401-5766

Email: [Tay\\_Emily@lacoed.edu](mailto:Tay_Emily@lacoed.edu)

<http://ExpandedLearningR11.com>



**Los Angeles County  
Office of Education**

# CDE-EXLD R11 Contact Information

**Darrell Parsons**

916-319-0314

[dparsons@cde.ca.gov](mailto:dparsons@cde.ca.gov)

Education Programs Consultant  
for LEAs/Grantees (A-Z)

**Anna Lee**

916-327-5928

[anlee@cde.ca.gov](mailto:anlee@cde.ca.gov)

Fiscal Analyst for  
LEAs/Grantees (A-Li)

**Fred Sharp**

916-319-0720

[fsharp@cde.ca.gov](mailto:fsharp@cde.ca.gov)

Fiscal Analyst for  
LEAs/Grantees (Lo-Z)



<https://www.cde.ca.gov/ls/ex/sosexplearncontacts.asp>



**Thank You For  
Coming Today**

*Have a great day*



Los Angeles County  
Office of Education