



LACOE Expanded Learning Advisory Meeting

Region 11 | September 8, 2023



ExpandedLearningR11.com

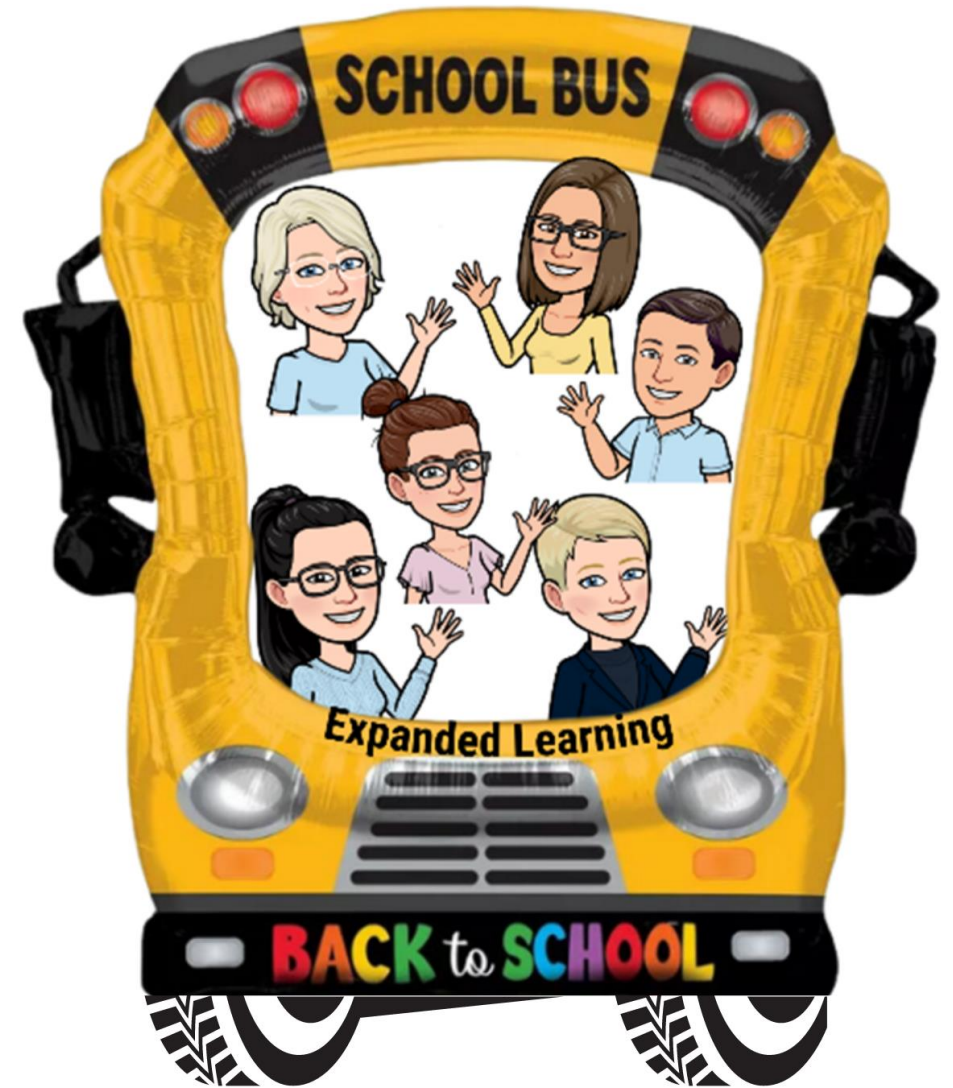


ExpandedLearning@lacoedu



Los Angeles County
Office of Education

WELCOME BACK!



Intended Audience

As a reminder, this meeting is intended for leaders of entities who are funded with:

- After School Education and Safety Grant (**ASES**)
- 21st Century Community Learning Centers Grant (**21st CCLC**)
- 21st CCLC After School Safety and Enrichment for Teens Grant (**21st CCLC ASSETs**)
- Expanded Learning Opportunities Program (**ELO Program**)
- Emergency and Secondary School Emergency Relief Summer Grant (**ESSER III**)

Leaders of Expanded Learning Programs include:

- Administrators
- Directors
- Managers
- Coordinators



This is a safe place to connect and share ideas, challenges, and thoughts.

Meeting Etiquette



Please **mute yourself** when not speaking.



Turn your **camera on** so we can connect face-to-face.



Please type **questions** in Chat Box.



Please **rename yourself** with your First and Last Name, and your Organization Name.



This session is being **recorded** for record-keeping, training, and quality-assurance purposes, however, will not be shared.



Today's Agenda

September 8, 2023 | 9:00 AM – 12:00 PM

Welcome

Grounding and Check-In, Good News Share, Back-to-School Considerations, Big Picture

CDE-EXLD Updates

Reporting Deadlines, Attendance Reductions, ELO Program Funding, Audits & FPM, Q & A

Region 11 Updates

Upcoming Events and Offerings, Resource Sharing, “Snapshot in Time” Survey

Legislative Updates

Trailer Bill Highlights, Pending Legislative Impacts

Meeting Closure

Announcements, Meeting Survey





Compassion Practice

Grounding – Journaling – Check-In – Debrief



Summer Share Outs



Los Angeles County
Office of Education



Back-to-School Considerations

Review:

- School Safety Plan
- Most recent student parent/guardian emergency contact information
- Student allergies
- COVID protocols

Practice safety drills:

- Active shooter, earthquake, fire, and lockdown

Staff Training:

- Staff training on Mandated Reporter
- Reviewing and ensuring the proper implementation of student release protocols
- Check with LEA about possible Naloxone Program (responding to an opioid overdose with the medication NARCAN)
- Mental wellness for students and staff

Safe and Supportive Environment

The program provides a safe and nurturing environment that supports the developmental, social-emotional and physical needs of all students.

Safe and supportive environment in action

Programmatic Level

- Program directors work closely with school leaders to create school-aligned health and safety procedures for the expanded learning program.
- The program develops policies and procedures to:
 - Clearly communicate health, safety, and behavior procedures with staff, participants, and families.
 - Clearly identify the health and medical needs of participants.
 - Ensure that staff are easily identifiable to participants, families, and other stakeholders (e.g., staff shirts, vests, badges, etc.).
 - Ensure that staff, participants, families, and school partners understand where participants are located throughout the duration of the program.
 - Ensure that staff are trained in safety and first aid.
 - Clearly document and communicate incidents (i.e. written reports and phone records).
 - Maintain an easily accessible list of all participants with current emergency contacts for program activities and field trips.
- The program connects participants and families to services, organizations and other resources that provide support beyond after school and summer programming (e.g., food security, health and mental health services, parent education, and other identified needs).

Staff Level

- The staff respectfully welcome and release participants from the program.
- Staff intentionally build and maintain trusting, nurturing, and supportive relationships with participants.
- Staff intentionally identify participant strengths, interests, and learning styles, and encourage participants to develop skills related to their strengths and interests.
- Staff hold participants to high expectations for behavior and achievement by:
 - Actively acknowledging positive behavior and participant accomplishments.
 - Calmly intervening when youth or adults are engaged in physically and/or emotionally unsafe behavior.
- Staff participate in on-going health and safety procedures, trainings, and practice drills with participants.



Participant Level

- Participants and staff share responsibility in building a sense of community and belonging.
- Participants actively cocreate behavioral agreements in collaboration with program staff.



The Big Picture: Seven Statewide Key Initiatives

“Expanded Learning” means before school, after school, summer, or intersession learning programs that focus on developing the academic, social, emotional, and physical needs and interests of students through hands-on, engaging learning experiences.

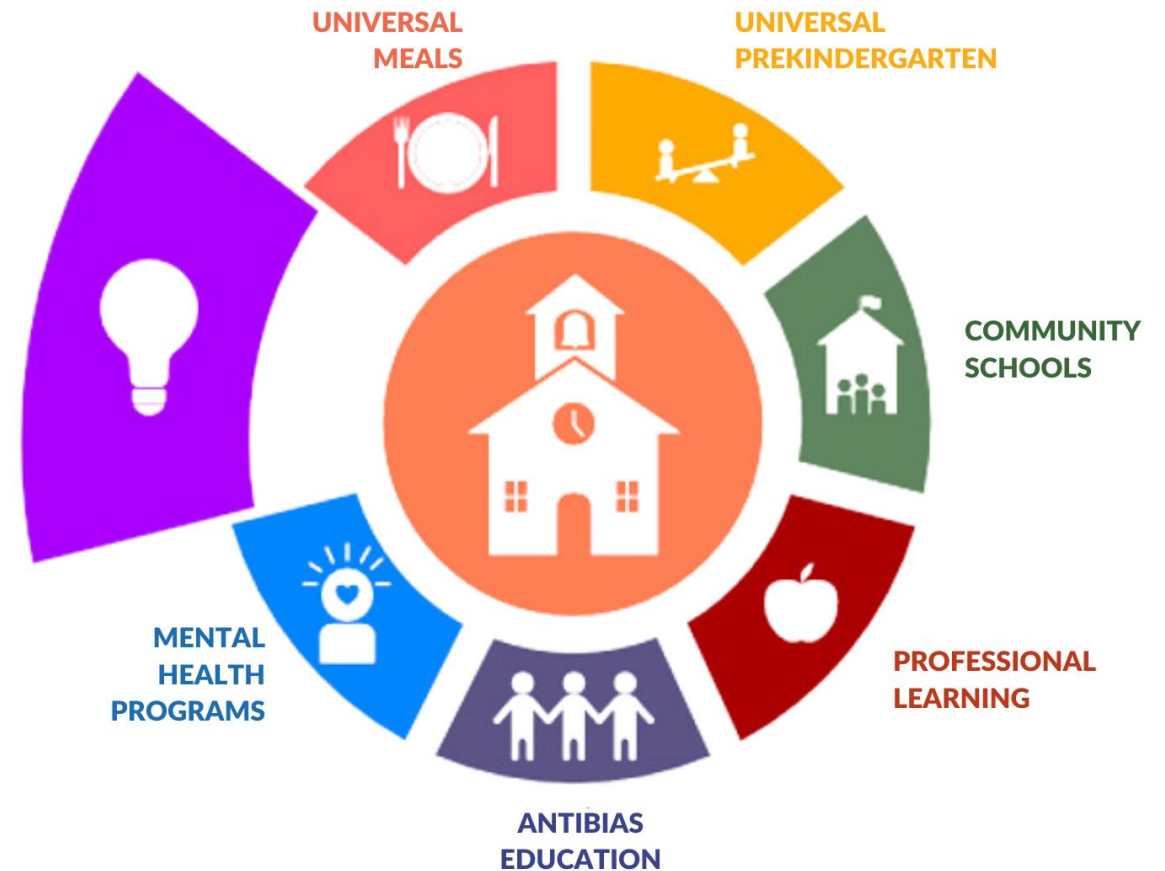
It is the intent of the Legislature that **Expanded Learning programs** are student-centered, results driven, include community partners, and complement, but do not replicate, learning activities in the regular school day and school year.



TRANSFORMING CALIFORNIA SCHOOLS



EXPANDED LEARNING PROGRAMS



TRANSFORMING CALIFORNIA SCHOOLS



Expanded Learning Program Funding

ASES

TK-9th

- Before School
- After School
- Supplemental

21st CCLC

TK-12th

- Before School
- After School
- Supplemental
- Equitable Access
- Family Literacy

ELO Program

TK-6th

- Before School
- After School
- Non-school days

EXPANDED
LEARNING
PROGRAMS



Los Angeles County
Office of Education

California System of Support for Expanded Learning (SSEL) – Nested Systems

CDE Expanded Learning Division (CDE-EXLD)

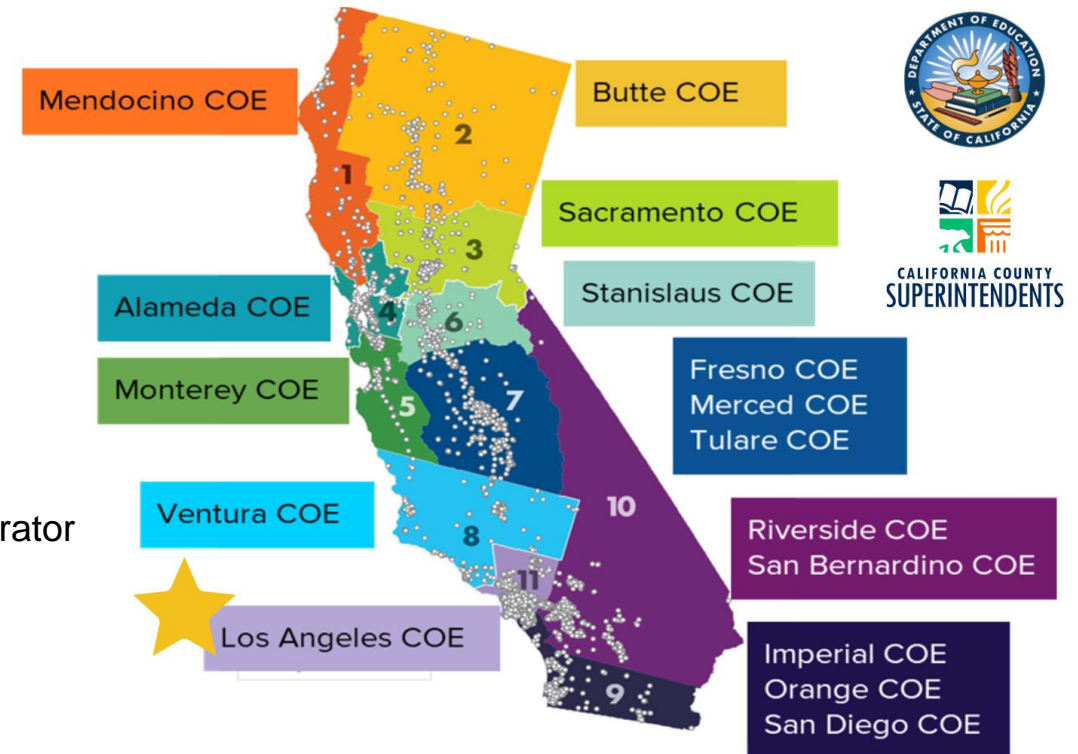
- Michael Funk, Division Director
- 16 County Offices of Education (COEs) in the 11 California County Superintendents regions
- CDE-EXLD Consultants and Fiscal Analysts
- Program Monitoring Office

Region 11: Los Angeles County Office of Education (LACOE)

- Debra Duardo, M.S.W., Ed.D., LACOE Superintendent

Expanded Learning Technical Assistance Unit (ELTAU)

- Michelle R. Perrenoud, Ed.D., SSEL County Lead & Regional Administrator
- Providing "Universal" Technical Assistance to LEAs, Grantees, and program providers funded with ASES, 21st CCLC, ELO-P and other state and federal monies to operate Expanded Learning programs in Los Angeles County
- Before school, after school, intersession and summer



CDE – Expanded Learning Division (EXLD)

Updates & Highlights

Darrell Parsons, Education Programs Consultant

Anna Lee, Fiscal Analyst

Fred Sharp, Fiscal Analyst



Los Angeles County
Office of Education



CDE – EXLD Updates: ASES, 21st CCLC, ELO-P

Expanded Learning – Wide

1. Changes to Expanded Learning implementation were included in **SB 114**, which have now transitioned to Ed Code. These updates are referenced in later slides, as well as the [ELO-P, ASES, and 21st CCLC Program Requirements Matrix](#).

ASES & 21st CCLC

2. 2023-24 GANs are in approval process with the CDE Executive Office.
3. 2023-24 GANs will be 12 months in duration.
4. 2022-23 Annual Outcomes Based Data for Evaluation and Continuous Quality Improvement (CQI) report is due October 13, 2023 (check your inbox for an email from CDE on 8/24/23).
5. (21st CCLC) [Annual Performance Report \(APR\)](#) Data Entry Window I for 2022–23 performance closes November 1, 2023.
6. The grant reduction process required by California Education Code is in place for calendar year 2023 (see next slide).
7. Q1 and Q5 Expenditure Report due October 31, 2023.
8. ASSIST training is coming on September 26, 2023.
9. [Cycle-C-ASES Renewal](#)
 - a) Submit a current **ASES Program Plan** by November 9, 2023
 - b) Due date of the **ASES Renewal Application** to be determined based on the completion of ASSIST for FY 23-24

ELO Program

10. Registration now open for the [2023 Fall ELO-P Academy](#).

Other Funding

11. [ESSER III – Round 2 Awards](#)

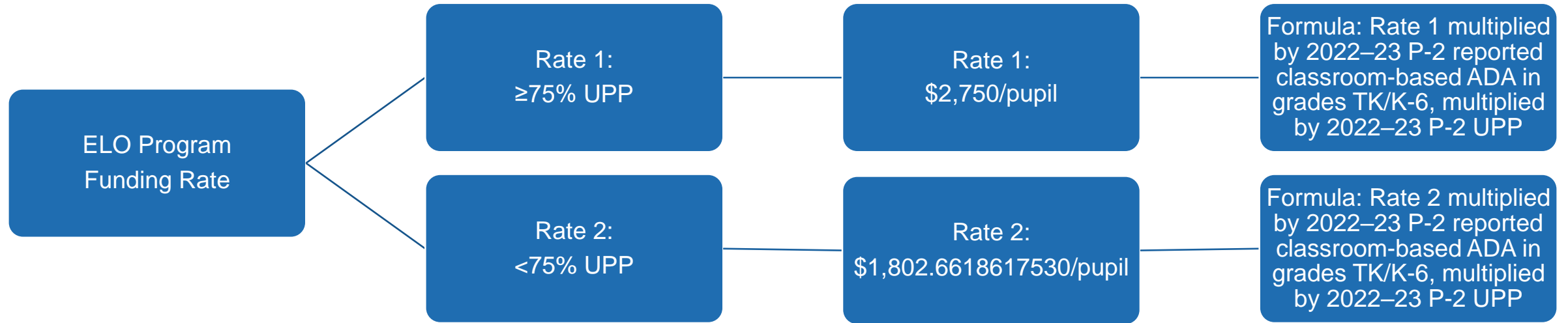


ASES & 21st CCLC Attendance Reduction Chart

Existing Grantee								
Fiscal Year	Fiscal Year		Fiscal Year		Fiscal Year		Fiscal Year	
2019–20	2020–21		2022–23		2023–24		2024–25	
Jan – Jun 2 nd Semi Annual	Jul – Dec 1 st Semi Annual	Jan – Jun 2 nd Semi Annual	Jul – Dec 1 st Semi Annual	Jan – Jun 2 nd Semi Annual	Jul – Dec 1 st Semi Annual	Jan – Jun 2 nd Semi Annual	Jul – Dec 1 st Semi Annual	Jan – Jun 2 nd Semi Annual
Calendar Year 2021		Calendar Year 2022		Calendar Year 2023		Calendar Year 2024		Calendar Year 2025
No Reductions		No Reductions		Reductions Reactivated		Reductions Reactivated		
No Penalty Assessed				75 % or below Reduction would be July 1, 2024		75 % or below Reduction would be July 1, 2025		
				85% two consecutive Years Reduction would be July 1, 2025				



ELO Program Rate Formula – Rate 1 & 2



LEAs eligible for Rate 1 in 2022–23 (2021–22 P-2 UPP greater than or equal to 75.00%) **remain eligible for Rate 1 for at least three years** even if the prior year (2022–23) UPP is less than 75.00% [EC Section 46120(d)(4)].

The amount for Rate 2 decreased by \$251.54 from 2022–23 as the result of the **3.27 percent statewide increase in classroom-based ADA in grades TK/K–6** used in the funding calculation, and no increase to the state budget allocation for the program.

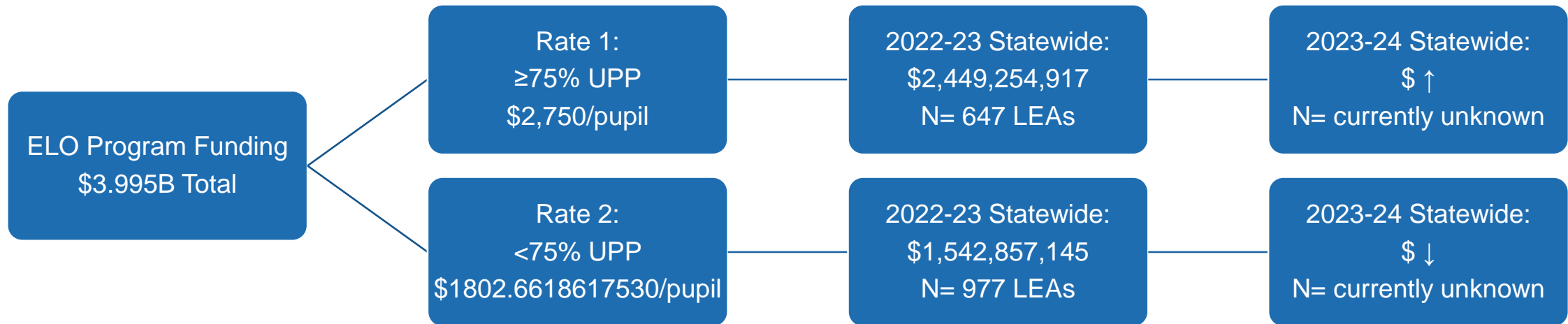
Rate 2 is calculated based on the amount of funds remaining from the appropriation in the budget item, after the amount allocated to Rate 1 LEAs, and is subject to change at P-1 and P-2 as the result of late notice charter school closures and funding adjustments described in EC Section 46120(d)(5).



2023-24 ELO Program Funding – Statewide to County Breakdown



2023-24 ELO Program Funding – Shifts within Funding Rates between 22-23 and 23-24



Important Expenditure Dates

FISCAL YEAR	ASES	21 st CCLC & ASSETs	ELO-P
2021-22	Needed to be expensed by 12/31/2022 (Q5/Q6)	Needed to be expensed by 12/31/2022 (Q5/Q6)	Expensed by 6/30/2024 (Two-year extension)
2022-23	Expensed by 12/31/2023 (Q5/Q6)	Expensed by 12/31/2023 (Q5/Q6)	Expensed by 6/30/2024 (One-year extension)
2023-24 & Beyond	June 30 of each year; unless Q5/Q6 extension is granted (rare)	June 30 of each year; unless Q5/Q6 extension is granted (rare)	Does not have an expenditure deadline. Carry over funding is permissible.





23-24 Audits & FPMS

Audit	Programmatic Documentation	Fiscal Documentation
ASES	2023-24	2022-23
ELO-P	2023-24	NA
Federal Program Monitoring	Programmatic Documentation	Fiscal Documentation
ASES	2023-24	2022-23
21 st CCLC	2023-24	2022-23
ELO-P*	2023-24	2022-23

FPM may occur regardless of the ELO Program operating independently or as a single, comprehensive program with ASES/21st CCLC.

Audit: (ASES and ELO Program) EC 41020 (a) It is the intent of the Legislature to encourage sound fiscal management practices among LEAs for the most efficient and effective use of public funds for the education of children in California by strengthening fiscal accountability at the school district, county, and state levels.

2023-24 Audit Guide (July 1, 2023): ASES – Section U; ELO Program – Section DZ

<https://eaap.ca.gov/wp-content/uploads/sites/281/2023/06/Audit-Guide-July-1-2023-6.30.23.pdf>

Federal Program Monitoring: (ASES, 21st CCLC, and ELO Program) The FPM Program is one of the processes the CDE uses to ensure that grantees are fulfilling their responsibility for operating programs that meet statutory requirements. Detailed information about the FPM process is posted on the CDE Compliance Monitoring web page located at <https://www.cde.ca.gov/ta/cr/>.

Expanded Learning Programs 2023–24 Program Instrument: <https://www.cde.ca.gov/ta/cr/documents/exlp2324.docx>



CDE-EXLD: ELO Program “Offer Access”

“**Offer Access**” means to recruit, advertise, publicize, or solicit to pupils and families using culturally and linguistically effective/appropriate communication channels.

When 15 percent or more of students enrolled in a public school speak a single primary language other than English, as determined by language census data from the preceding year, all notices, reports, statements, and records sent to parents of such students are written in English and the primary language, and may be responded to either in English or the primary language (EC Section 48985).

Examples include, but are not limited to: updating/advertising a website, emails, handouts, announcements, etc.



CDE-EXLD: ELO Program “Provide Access”

“**Provide Access**” means to enroll in the Expanded Learning Opportunity Program (ELO Program). If a parent or guardian has a signed ELO Program registration form and that form is on file, the pupil shall be considered enrolled in the ELO Program.

Pupils opting not to participate in the ELO Program shall not generate a penalty for an LEA.

For a LEA receiving an ELO Program apportionment, transportation shall be provided for any pupil who attends a school that is not operating an ELO Program to attend a location that is providing an ELO Program and to return to their original location or another location that is established by the LEA.

Guidance

- The LEA may state clearly on the registration form: “Not returning a signed form by a designated date is the equivalent of opting out of the program. However, families may opt in at any time and be placed on the waitlist should the program be full.” The LEA can draw from the waitlist throughout the year.
- Audits will be assessing documentation of good faith efforts in complying with 46120(a)(1): “It is the intent of the Legislature that all LEAs offer all unduplicated pupils in classroom-based instructional programs access to comprehensive after school and intersessional expanded learning opportunities.”
- ELO Program apportionments are intended to give as many opportunities as possible for students to have expanded learning experiences.



CDE-EXLD: Q & A

- Use the **Chat Box** or use the **Raised Hand** reaction
- **Please ask questions that apply to the larger group**
- Grantee and LEA-specific questions can be addressed directly with CDE:



Darrell Parsons

Education Programs Consultant for all Grantees and LEAs in R11

dparsons@cde.ca.gov





Break Time

Please return in 10 minutes

**Next Up:
Region 11 Updates**
