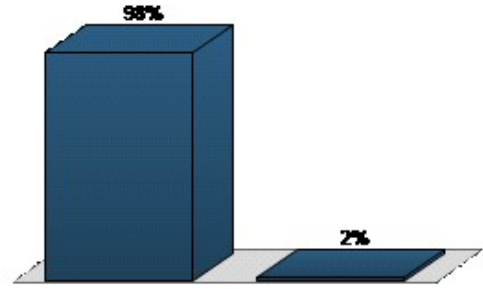


5. Do you feel it is important for your district or organization to have such a plan? (Multiple Choice)

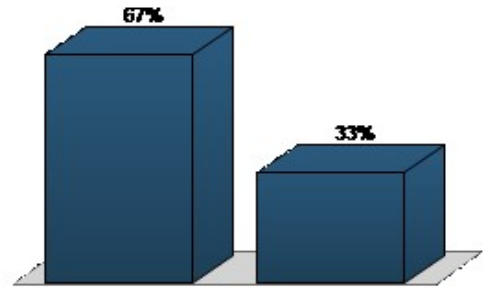
Responses		
	Percent	Count
Yes	98.21%	55
No	1.79%	1
Totals	100%	56



Question Statistics	
Mean	1.02
Median	1.00
Variance	0.02
Standard Deviation	0.13

6. If yes, do you feel it is your job to lead the effort in creating such a plan? (Multiple Choice)

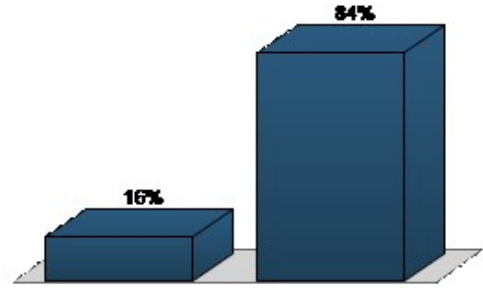
Responses		
	Percent	Count
Yes	67.27%	37
No	32.73%	18
Totals	100%	55



Question Statistics	
Mean	1.33
Median	1.00
Variance	0.22
Standard Deviation	0.47

7. If yes, can you devote at least 6 hours a week to work on such a plan? (Multiple Choice)

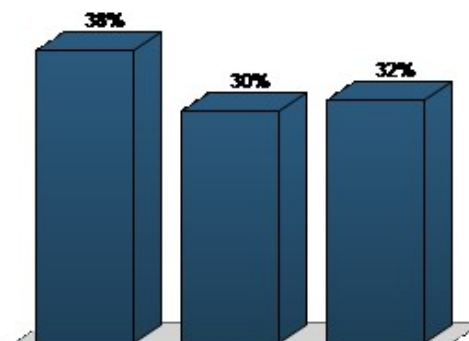
Responses		
	Percent	Count
Yes	16.33%	8
No	83.67%	41
Totals	100%	49



Question Statistics	
Mean	1.84
Median	2.00
Variance	0.14
Standard Deviation	0.37

8. If yes, check all that apply that would be helpful to you in creating such a plan: (Multiple Choice - Multiple Response)

Responses		
	Percent	Count
Attend a workshop on "how to create a sustainability plan"	38.16%	29
Receive coaching on developing a sustainability plan	30.26%	23
Work with others in a peer-to-peer group in developing a plan where outside facilitation would be provided	31.58%	24
Totals	100%	76

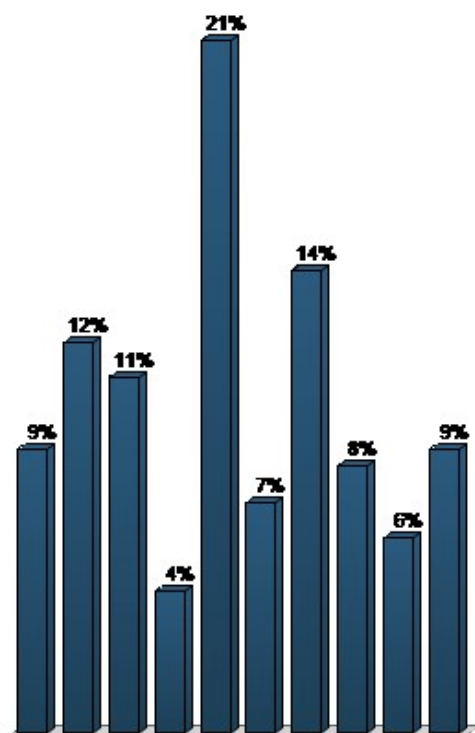


Question Statistics	
Mean	1.93
Median	2.00
Variance	0.69
Standard Deviation	0.83

9. This summer I plan to: (please check all that apply) (Multiple Choice - Multiple Response)

Responses		
	Percent	Count
Have a staycation	8.6%	16
Vacation in the state of CA	11.83%	22
Vacation in one or more states outside of	10.75%	20

CA		
Vacation on another continent	4.3%	8
Work! What is a vacation?	20.97%	39
Go to outdoor concerts in my neighborhood	6.99%	13
Visit the ocean	13.98%	26
Read a non-work related book	8.06%	15
Work in my garden	5.91%	11
Visit family (family time is different than vacation) in and/or out of state	8.6%	16
Totals	100%	186



Question Statistics	
Mean	5.30
Median	5.00
Variance	7.27
Standard Deviation	2.70