

# **REGION 11 Expanded Learning Unit**

**Pre-Recorded Webinar #2  
2015-16**

**Quality Standards Series**

**Part 2 of 4**



This series consists of 4 parts

1. Session#1: pre-recorded webinar
2. Session #2: pre-recorded webinar
3. Session #3: 3-4hour face to face training
4. Session #4: 3-4 hour face to face training

Special note: there are assignments you have to complete after each webinar and bring with you to Session #3; they are requirement to participate in the face to face sessions.



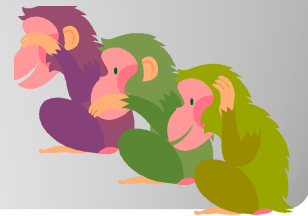
## Series Overview

- We are glad that you have chosen to review this pre-recorded webinar
- A couple of hints to make the most of your learning experience:
  1. Allow for 60 minutes to watch the webinar and do the assignments
  2. Download the handouts prior to starting the webinar:  
<https://aspire.lacoe.edu>

Go to Resources/Webinars/Quality Standards Session #2

  3. Do not forget to do the homework assignment and bring it with you to the Session #3 the first face to face session
  4. Stay engaged

**Helpful Hints**



- Crosswalk: outlines a number of available tools that can be used for quality assessment and improvement
- Quality Self Assessment Tool and User's Guide
- Quality Self Assessment Rubric

**Language**



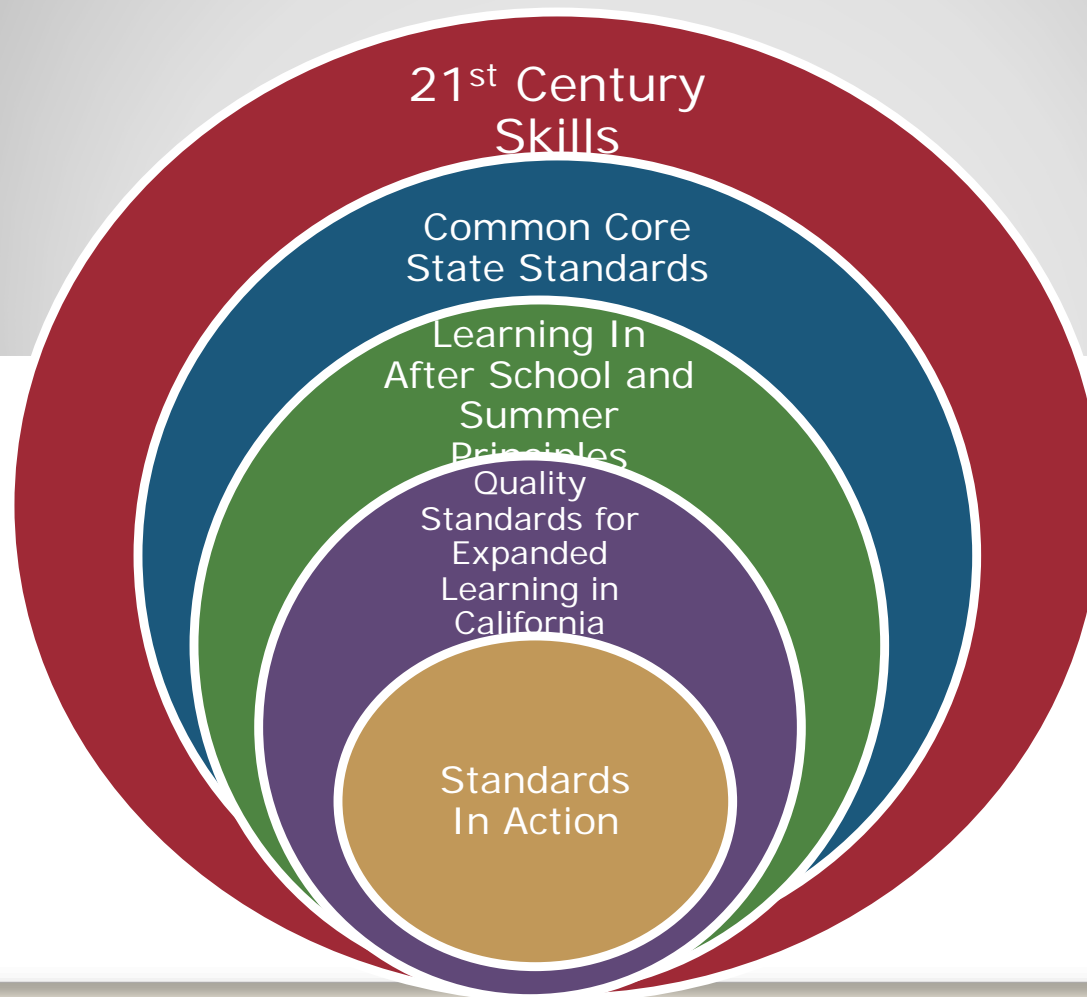
Innovation

Quality

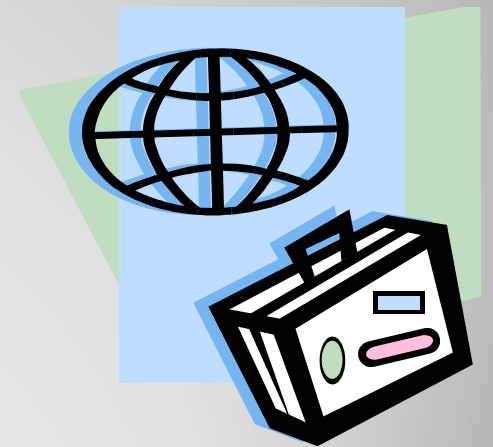
Compliance

**A reminder on : Why This Series?**

# Reconnecting with the macro model



- Background information
- Recommended uses
- Two major categories



**Let's Explore the Quality Standards**

- Partnership between After School Division of CDE and California AfterSchool Network
- Two phases
- Field input
- A work in progress



## Background Information



- Framework of clear expectations for all stakeholders
- A guide to inform After School Division decision making
- A guide for program providers to assess their own programs in order to help determine what they are doing well and what needs improvement



## Recommended Uses of the Quality Standards

- A guide for parents and youth to identify quality programming
- A guide for school principals and districts superintendents to reinforce and advance key priorities
- A complement to other standards in the State of CA focused on quality improvement

**Recommended Uses Continued**

- Point of Service
  - Those that take place at the site level, can look different at each site
- Programmatic
  - Those that impact program regardless of the site

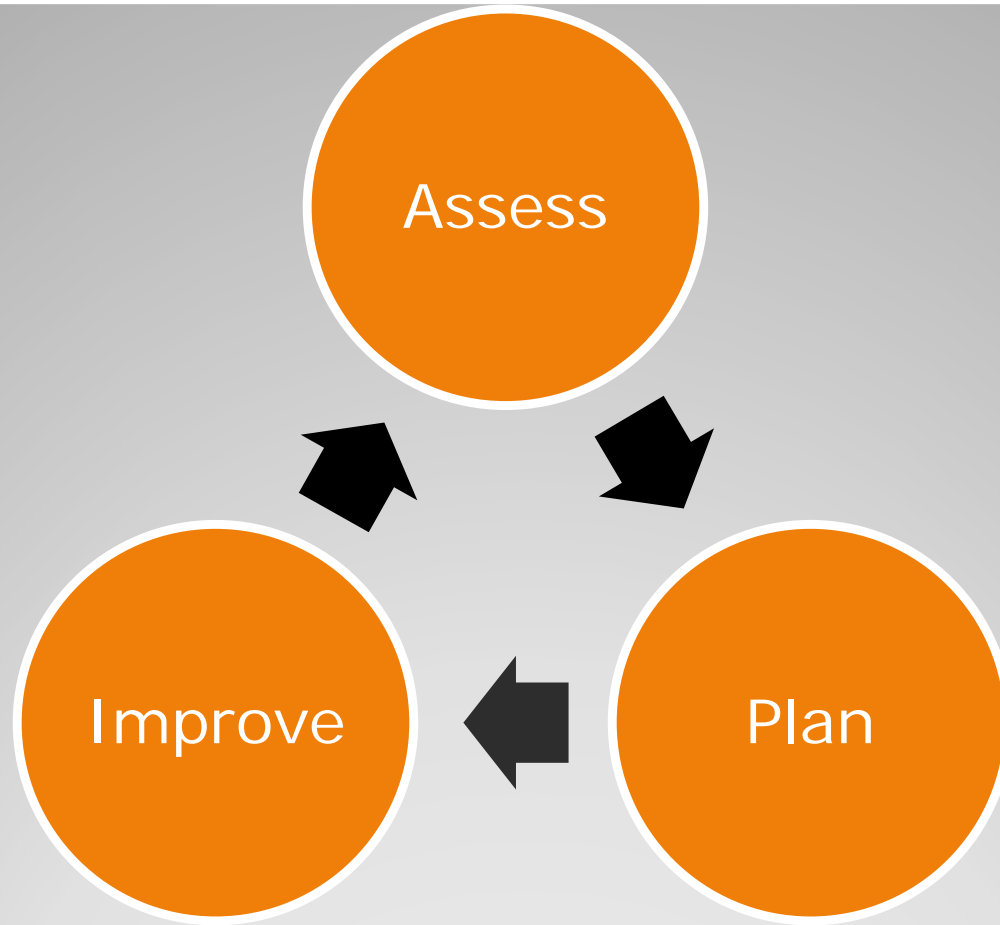
## 2 Major Categories

Point of Service Quality Standards	Programmatic Quality Standards
1. Safe and supportive environment	7. Quality staff
2. Active and engaged learning	8. Clear vision, mission and purpose
3. Skill building	9. Collaborative partnerships
4. Youth voice and leadership	10. Continuous quality improvement
5. Healthy choices and behaviors	11. Program management
6. Diversity, access and equity	12. Sustainability

## Quality Standards for ELP in CA

STANDARD	DESCRIPTION
a. Safe and supportive environment	
b. Sustainability	
c. Diversity, access and equity	
d. Collaborative partnerships	
e. Skill building	
f. Healthy choices and behavior	
g. Quality staff	
h. Program management	
i. Clear vision, mission and purpose	
j. Youth voice and leadership	
k. Continuous quality improvement	
l. Active and engaged learning	

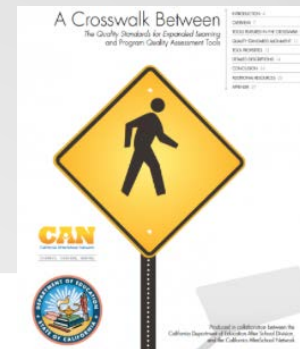
## Match Activity



# Continuous Quality Improvement Cycle

- Includes a review of 7 tools that assess program quality at both levels
- The guide illuminates the overlap between currently available assessment tools and the twelve Quality Standards, as well as identifies gaps in alignment.

## Crosswalk



- History
- Recommended tool if agency/district does not have one
- Guide



# Quality Self Assessment Tool and Guide



## 1. Watch the following Mini-Webinar

a. Quality Standards in California: <https://vimeo.com/117941029>

2. Read pages: 1-5 and 19-22 of the Quality Standards for Expanded Learning Guide (a document you downloaded)

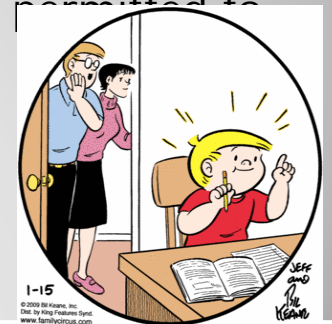
3. Read pages 1-9 of the: A Crosswalk Between The Quality Standards for Expanded Learning and Program Quality Assessment Tools (a document you downloaded)

4. Type a list of 10 major learning points you learned from the above assignments. Your sheet should have your name, agency/district name and date of Session #3 you are attending.

5. Bring this homework assignment with you to Session #3.

They are due prior to the start of the training. You will not be permitted to stay if you have not submitted this homework.

# Homework



1-15  
© 2009 King Features, Inc.  
Dist. by King Features Synd.  
www.kingfeatures.com

"Look! He's been struck by enlightening."

STANDARD	DESCRIPTION
a. Safe and supportive environment	1
b. Sustainability	10
c. Diversity, access and equity	2
d. Collaborative partnerships	7
e. Skill building	12
f. Healthy choices and behavior	4
g. Quality staff	8
h. Program management	6
i. Clear vision, mission and purpose	3
j. Youth voice and leadership	9
k. Continuous quality improvement	11
l. Active and engaged learning	5

## Answers to Match Activity

If you have not signed up for the face to face trainings offered for Sessions #3 and #4 go to ASPIRE and do so today

<http://aspire.lacoe.edu>

-choose Events tab and then Staff Development and Training link

*These sessions are being offered throughout the county*

**Next Steps**



Thank  
You

FOR ALL YOU DO TO MAKE A  
DIFFERENCE IN THE LIVES OF  
THE STUDENTS YOU SERVE IN  
YOUR PROGRAM!