

Local Control Funding Formula (LCFF)

Presented to : Los Angeles County After School
Advisory Committee

October 25, 2013

Mary Jo Ginty, After School Regional Lead

Credits and Thank You's

- Santa Clara Office of Education
- Butte County Office of Education
- Local Agency Systems of Support, CDE
- Ca School Boards Association (CSBA)

Key Components

- History
- Programmatic
- Financial
- Development process
- Approval process

History

- Complex formulas
- Many categorical programs vs. weighted student formula
- 2013: Local Control Funding Formula (LCFF)
- Outcome: Most education funds will be based on specific student needs and will allow maximum flexibility at the local level
- Local Control and Accountability Plans (LCAPs)

History Continued

Before LCFF	After LCFF
Revenue limits	LCFF base funding which is different by grade levels
State categorical programs with temporary tiered flexibility	Unduplicated pupil weight, including concentration funding
K-3 class size reduction limited funding with unlimited class sizes	K-3 class reduction; target 24:1
Accountability and performance process separate from funding	Local Control Accountability Plans required

History Continued

- What has not changed
 - Financial audits
 - Williams compliance still required
 - School Accountability Report Cards (SARC)
 - LEAs are still subgrantee of the state
 - Federal funding requirements (planning and accountability)

Programmatic

- 8 state priority areas that must be in LCAP
 1. Student Engagement
 2. Student Achievement
 3. School climate
 4. Basic services
 5. Implementation of CCSS and other academic performance standards
 6. Course access
 7. Parental involvement
 8. Other student outcomes

Financial

- Replaces existing revenue limit funding system and more than 40 categorical programs by consolidating them into 1 revenue stream on a permanent basis
- \$25 billion allocation to roll out over 8 years
- Roll out plan : LEAs will receive about the same amount of funding as 2012-13 plus an additional amount each year to bridge the gap between current funding level and next LCFF target levels

LCFF Calculation

- Base grant
- Augmentation to base grant
- Supplemental grant
- Concentration grant
- Add-ons to the formula

Calculations (part 1)

- Base grant per ADA (by grades)

K-3 \$6,845

7-8 \$7,154

4-6 \$6,947

9-12 \$8,289

- Augmentation to base grant
 - Class size reduction: about \$712 ADA (K-3 only)
 - Career Technology Education (CTE): about \$216 ADA (9-12 only)

Calculations (part 2)

- Supplemental grant

- equal to 20% of the Base Grant for each EL/LI/foster (unduplicated)

- 20% of the Augmentation grant

- Concentration grant

- equal to 50% of base grant for each EL/LI/foster (unduplicated) about 55% of the total enrollment

- 50% of the augmentation grant

* Must ensure proportionality when spending EL/LI/foster funds

Calculations (part 3)

- Add-ons to formula
 - Transportation
 - Targeted Instructional Improvement Block Grant

* These will be capped at 2012-13 levels

Development of LCAP

- Use SBE adopted template*
- Set annual goals in all 8 areas with action plans
- Solicit input from stakeholders while developing the plan**
- Parent Advisory and EL Committee (15% or greater)
- Plan must be updated annually and adopted every 3 years

*To be adopted by 3-3-14

** Charter schools are exempt from some public hearing and comment requirements

Approval Process

LEAs

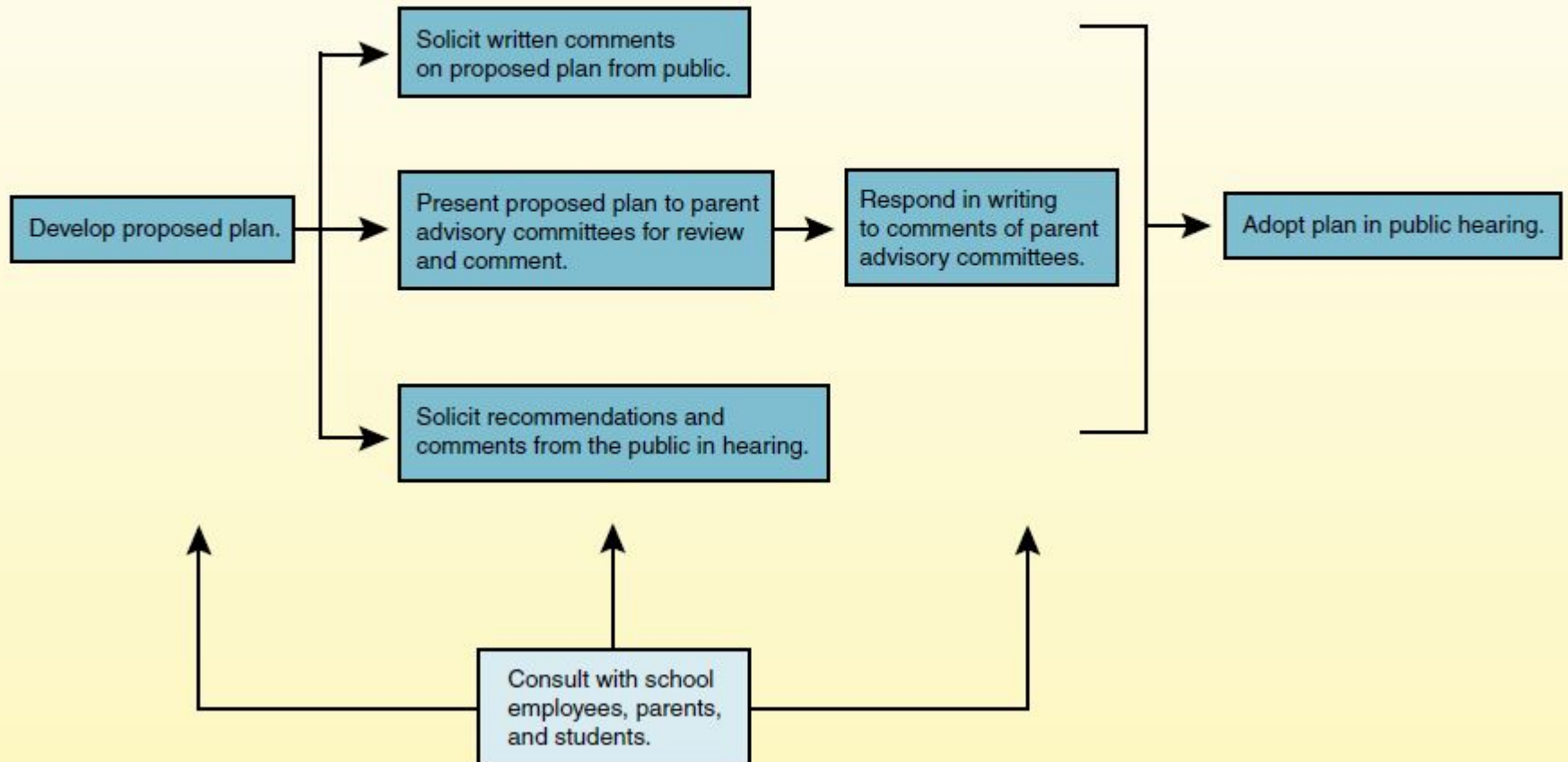
- Adopted by LEA board by July 1
- County Office of Educations must review and approve by October 8

Charter schools

- Assessment conducted by charter authorizer not COE

Figure 10

School District LCAP Adoption Process



LCAP = Local Control and Accountability Plan.

Areas of Concern

- Many unknowns
- No more statutory requirement for education funding
- Difficult to evaluate and compare districts
- # of years to reach targeted funding
- New governor in the future
- Changes in the economy
- No more estimated COLA

Resources

- LCFF Web Page

<http://www.cde.ca.gov/fg/aa/lc/>

- LCFF Channel

<http://lcff.wested.org/lcff-channel/>

- CSBA

www.csba.org